

**WILDBROOK, RALEY ROAD, LOCKS HEATH,
SOUTHAMPTON, SO31 6PD**

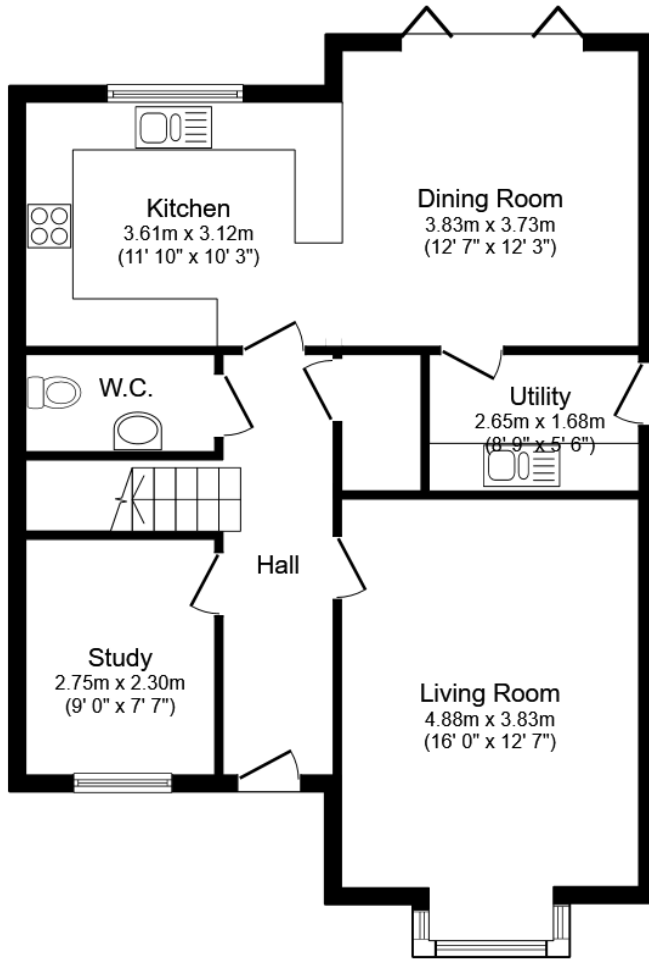
NEW HOME



£685,000 Freehold

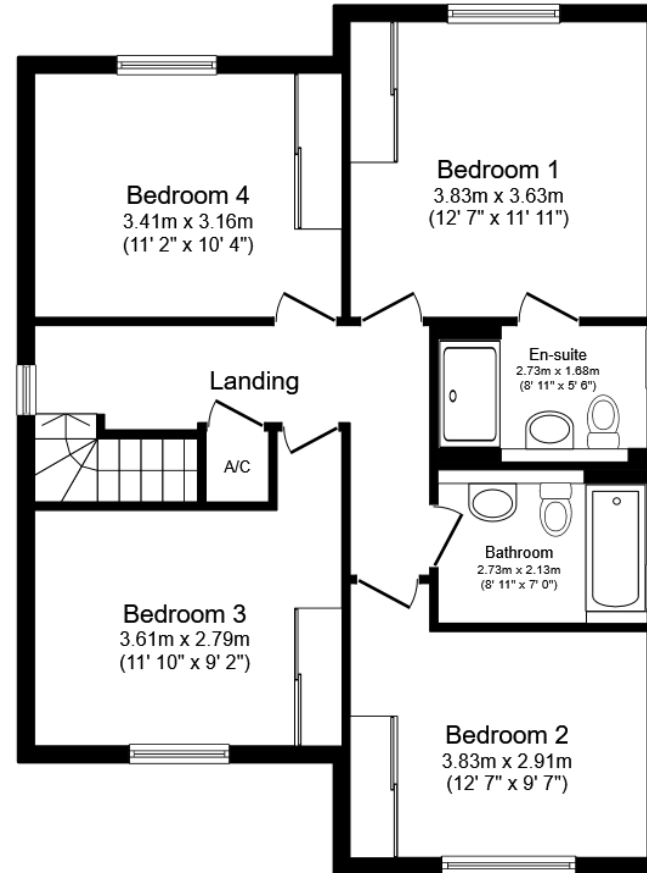
Please note these images are of a similar handed plot and are representative of the style and finish.

Fantastic opportunity to purchase this bespoke, newly constructed, four bedroom detached family home, finished to a high specification throughout and located in the development of Wildbrook, Locks Heath. Viewing recommended and strictly by appointment only.



Ground Floor

Floor area 74.6 m² (803 sq.ft.)



First Floor

Floor area 73.6 m² (792 sq.ft.)

TOTAL: 148.2 m² (1,595 sq.ft.)

This floor plan is for illustrative purposes only. It is not drawn to scale. Any measurements, floor areas (including any total floor area), openings and orientations are approximate. No details are guaranteed, they cannot be relied upon for any purpose and do not form any part of any agreement. No liability is taken for any error, omission or misstatement. A party must rely upon its own inspection(s). Powered by www.Propertybox.io

Introduction

This incredible dwelling has been constructed of brick elevations, with rendered features, under a pitched tiled roof by Landwise Ltd, who are locally renowned for combining sought after locations, traditional skills and contemporary designs to create generous and comfortable homes to be proud of. Situated in the highly popular residential location of Locks Heath with excellent transport links, local amenities, popular schooling and a strong community spirit, this superb new build detached property is now available for sale.

The Local Area

Locks Heath is popular residential suburb in the borough of Fareham, Hampshire and is historically famed for strawberry growing. Neighbouring villages include Sarisbury Green, Park Gate, Warsash and Titchfield Common.

Locks Heath boasts a shopping complex where you will find an array of services including a doctor's surgery, community centre, Post Office, public library, chemist and a public house. Shopping facilities include Waitrose, Iceland and a number of other outlets and independent traders. There is also a range of popular coffee shops, and eateries.

Schooling in the area is a particular draw for families, with Locks Heath Infant and Junior Schools being situated in nearby Warsash Road. Brookfield School in Brook Lane is the catchment school for 11-16-year-olds. Locks Heath is also well catered for by pre-schools and nurseries.

The area is served by Swanwick Train Station providing services along the South Coast with connecting travel into London. The M27 motorway is accessed at junction 9 which links the cities of Southampton and Portsmouth.



Specification

- Quality Kempley facing brick with concrete tiles and brick features. Rendered features to Plot 3.
- UPVC triple glazed windows and visifold doors to the kitchen/diner with white finish internally.
- Anthracite composite front door with satin chrome ironmongery.
- White satin painted chamfered edge contemporary architraves and skirting.
- Oak finish Mexicano doors throughout with contemporary black ironmongery.
- Contemporary staircase by Multi Turn - white satin painted spindles and ash handrail.
- All plastered walls painted Dulux Timeless. All ceilings plastered and painted white.
- State of the art energy saving electric Air Source Heat Pump system designed by Grant with up to 7 year warranty.
- Zonal controlled Underfloor heating to ground floor and thermostatically controlled radiators to first floor rooms.
- Heated chrome towel rails to cloakrooms, bathrooms and ensuites with additional electric underfloor heating.
- Generous number of power points throughout, chrome to kitchen with USB's to kitchen, study and all bedrooms.
- Downlighters to all rooms with additional pendant to bedrooms.
- TV Aerial Points to all bedrooms and receptions and wired for Sky Q.
- Provision of Ring Door Bell and fitted burglar alarm system.
- Smoke alarms hard-wired with battery back up.
- Luxurious kitchen from Symphony Milano Kitchen collection with quartz worktops.
- All appliances from Bosch - Electric fan double oven, induction hob with cooker hood, integrated fridge and freezer, built in wine cooler, dishwasher.
- Porcelanosa ceramic floor tiles to kitchen, family room, WC and hallway.
- Porcelanosa white contemporary sanitary ware with fully tiled Porcelanosa ceramic wall and floor tiles to all bathrooms and ensuites.
- Porcelanosa vanity sink cupboards with mirror lights fitted to bathroom and ensuite.
- Wardrobes to bedrooms with sliding oak finish mirror or shaker style doors, fitted shelves and hanging rails.
- Generous patio areas to rear of property.
- Fenced and turfed enclosed rear garden.
- Front garden enclosed and landscaped in accordance with approved plan.
- Outside water tap and external power socket.
- Outside PIR operated courtesy lighting adjacent to all external doors.
- Car charging point to all plots and light and power to carports - Block paved parking spaces and driveway.

Ground Floor Accommodation

The entrance hallway offers doors to principal rooms, a storage cupboard and stairs ascending to the first floor.

The living room is a lovely space for relaxing and benefits from a front elevation bay window. A study, to the front aspect, is ideal for homeworkers.

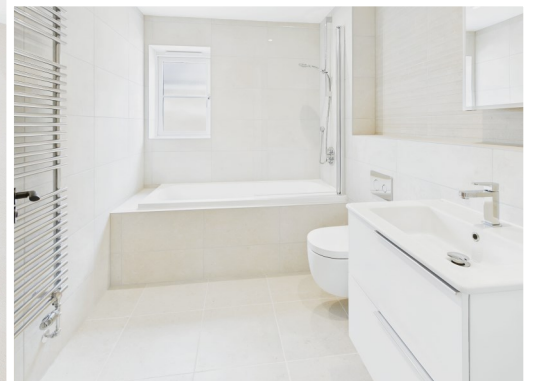
The fantastic open plan kitchen/diner spans the width of the dwelling and will be a huge hit with culinary enthusiasts, featuring a range of integrated appliances. This is a beautiful social space, perfectly suited to entertaining. Bifold doors open out to the rear garden offering a seamless transition from indoor to outdoor living. The utility room hosts a range of fitted units with appliance space.

The ground floor also benefits from the added convenience of a cloakroom.



First Floor Accommodation

Rising to the first floor, the landing offers doors to principal rooms and an airing cupboard. There are four well-proportioned bedrooms each with fitted wardrobes. Bedroom one boasts the added benefit of an en-suite, complete with a shower, wash hand basin and WC. The remaining bedrooms are serviced by the modern family bathroom.





Outside

The property is approached via a driveway providing off-road parking and leading to the front door under a canopied porch. The rear garden is fully enclosed and largely laid to lawn. The established woodland beyond offers a sense of seclusion and privacy.

Landwise Ltd are members of



ACTING AGENT



Tel: 02380 404055
Web: www.mannsandmanns.co.uk
Manns and Manns Ltd
1 & 2 Brooklyn Cottages , Portsmouth Road
Bursledon, Southampton
SO31 8EP



Disclaimer: Manns & Manns Ltd for themselves and together the vendors advise that these particulars do not constitute an offer or a contract and whilst these details are believed to be correct they are made without responsibility. All applicants must satisfy themselves by inspection as to the correctness of the statements made. The property is offered subject to formal contract and is being unsold AND ON THE DISTINCT UNDERSTANDING THAT ALL NEGOTIATIONS SHALL BE CONDUCTED THROUGH MANN'S AND MANN'S.

Nothing in these particulars shall be deemed to be a statement that the property is in good repair or condition or otherwise, nor that services or facilities are in good working order. All areas and measurements are approximate. Any reference to alterations or use is not intended to be a statement that any necessary planning, building regulation, guarantees, listed building or any other consent has been obtained.

No fixtures and fittings are included in any sale of a property, unless explicitly agreed in writing with the agent once agreed with the seller (s).

Manns and Manns may use AI images to show empty properties with furniture, this is purely provided as a guide. Fixtures and fittings are not included, and purchasers must satisfy themselves with their own measurements to check furniture of their choosing fits the relevant spaces.

Company Registration Number 06591504